

**Part III
Attachment III-C
Appendix III-C.2**

FACILITY SURFACE WATER DRAINAGE DRAWINGS

**Pescadito Environmental Resource Center
MSW No. 2374
Webb County, Texas**

PESCADITO
ENVIRONMENTAL RESOURCE CENTER

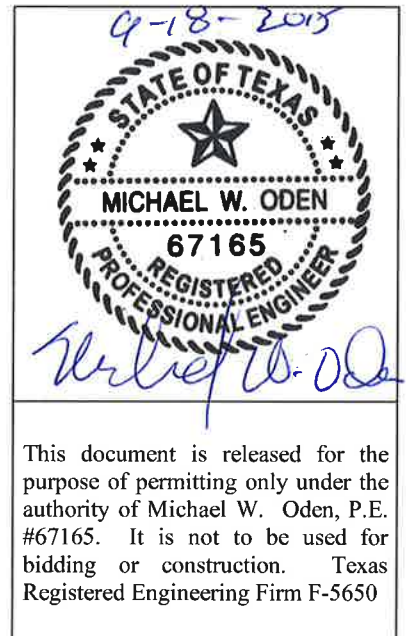
**Initial Submittal March 2015
Supplement April 2015
Revised September 2015**

**Prepared for:
Rancho Viejo Waste Management, LLC
1116 Calle del Norte
Laredo, TX 78041**

**Prepared by:
CB&I Environmental and
Infrastructure, Inc.**



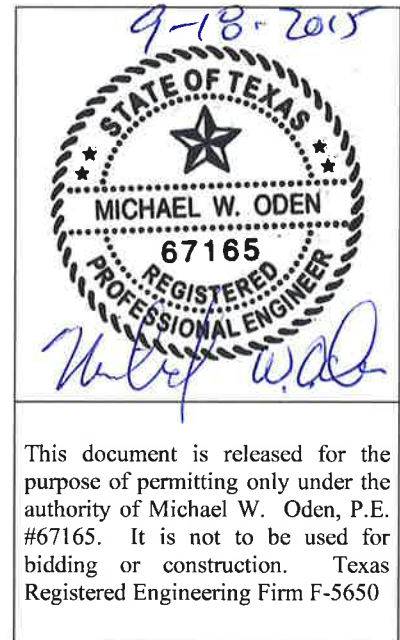
**12005 Ford Rd, Suite 600
Dallas, TX 75234**

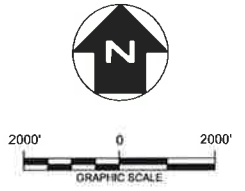
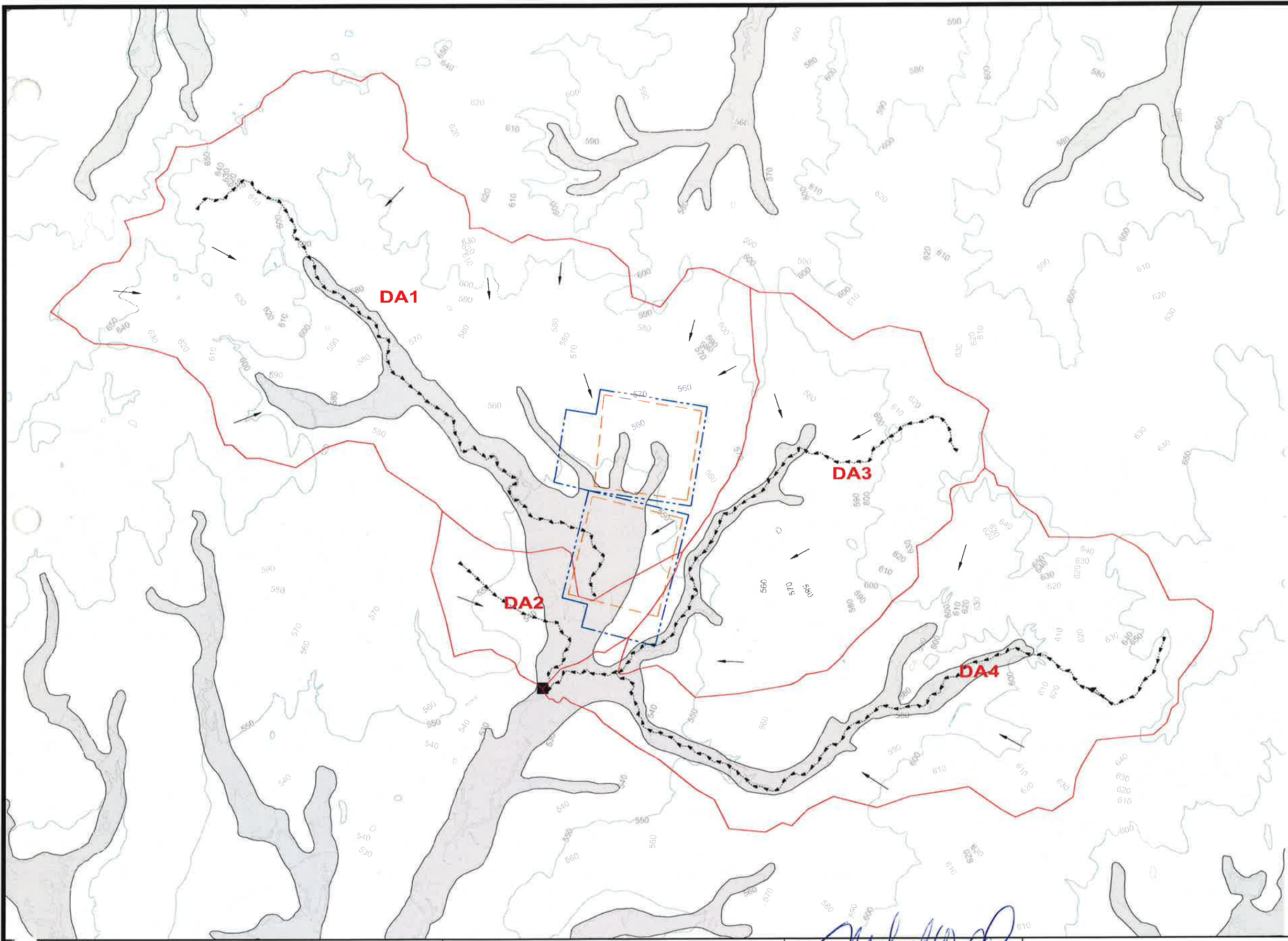


This document is released for the purpose of permitting only under the authority of Michael W. Oden, P.E. #67165. It is not to be used for bidding or construction. Texas Registered Engineering Firm F-5650

Table of Contents

III-C.2-1	Pre-Development Conditions – Regional Overview.....	1
III-C.2-2	Pre-Development Conditions – Facility and Immediate Surroundings	2
III-C.2-3	Intermediate Development Conditions – Regional Overview	3
III-C.2-4	Intermediate Development Conditions – Facility and Immediate Surroundings.....	4
III-C.2-5	Post-Development Conditions – Facility and Immediate Surroundings.....	5
III-C.2-6	Post-Development Stormwater Feature Overview	6
III-C.2-7	Terrace Berm, Downchute, and Perimeter Channel Details	7
III-C.2-8	Perimeter Channel Culvert Details	8
III-C.2-9	Perimeter Channel Drainage Profiles (A and B).....	9
III-C.2-10	Perimeter Channel Drainage Profiles (C, D, E and F).....	10
III-C.2-11	Detention Basin Plan, Profile and Details (1 of 2).....	11
III-C.2-12	Detention Basin Plan, Profile, and Details (2 of 2).....	12
III-C.2-13	Erosion Control Details	13
III-C.2-14	100-Year Floodplain Cross Section Plan View	14
III-C.2-15	100-Year Floodplain Cross Section Profile View.....	15





LEGEND

- PERMIT BOUNDARY
- WASTE UNIT BOUNDARY
- PRE-DEVELOPMENT SUBCATCHMENT BOUNDARIES
- STORMWATER FLOW PATH
- STORMWATER FLOW DIRECTION
- JUNCTION 1 (SEE NOTE 5)
- 100-YEAR FLOODPLAIN (PRE-CLOMR)

NOTES


1. CONTOURS ADAPTED FROM TEXAS NATURAL RESOURCE INFORMATION SYSTEM "TEXAS ELEVATION FRAMEWORK (HYPSOGRAPHY)" QUADRANGLES.
2. BOUNDARY AND IMPROVEMENT SURVEY DEVELOPED BY MEJIA ENGINEERING COMPANY ON AUGUST 15, 2011 AND JUNE 9, 2014.
3. FOR CLARITY, NOT ALL SITE FEATURES MAY BE SHOWN.
4. THE NEED FOR FLEXIBILITY TO ACCOMMODATE ADJUSTMENTS AND MODIFICATIONS IS ANTICIPATED CONSIDERING THE SIZE, COMPLEXITY, AND LIFE OF THE PROJECT.
5. JUNCTION 1 REPRESENTS THE MOST DOWNSTREAM ELEMENT WITHIN THE STORMWATER MODELS AND IS THE MAIN POINT OF COMPARISON BETWEEN MODELS.
6. "DRAINAGE AREAS" (DA) ARE TAKEN FROM THE CONDITIONAL LETTER OF MAP REVISION, PREPARED BY CB&I ENVIRONMENTAL AND INFRASTRUCTURE, INC. APPROVED NOVEMBER 21, 2014.

REV. NO.	DATE	DESCRIPTION
1	9/2015	NOD 1



CB&I Environmental & Infrastructure, Inc.
TBPE FIRM F-6650

CB&I Environmental and Infrastructure, Inc. has prepared this document for a specific project or purpose. All information contained within this document is copyrighted and remains intellectual property of CB&I Environmental and Infrastructure, Inc. This document may not be used or copied, in part or in whole, for any reason without expressed written consent by CB&I Environmental and Infrastructure, Inc.



Michael W. Oden

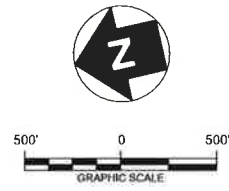
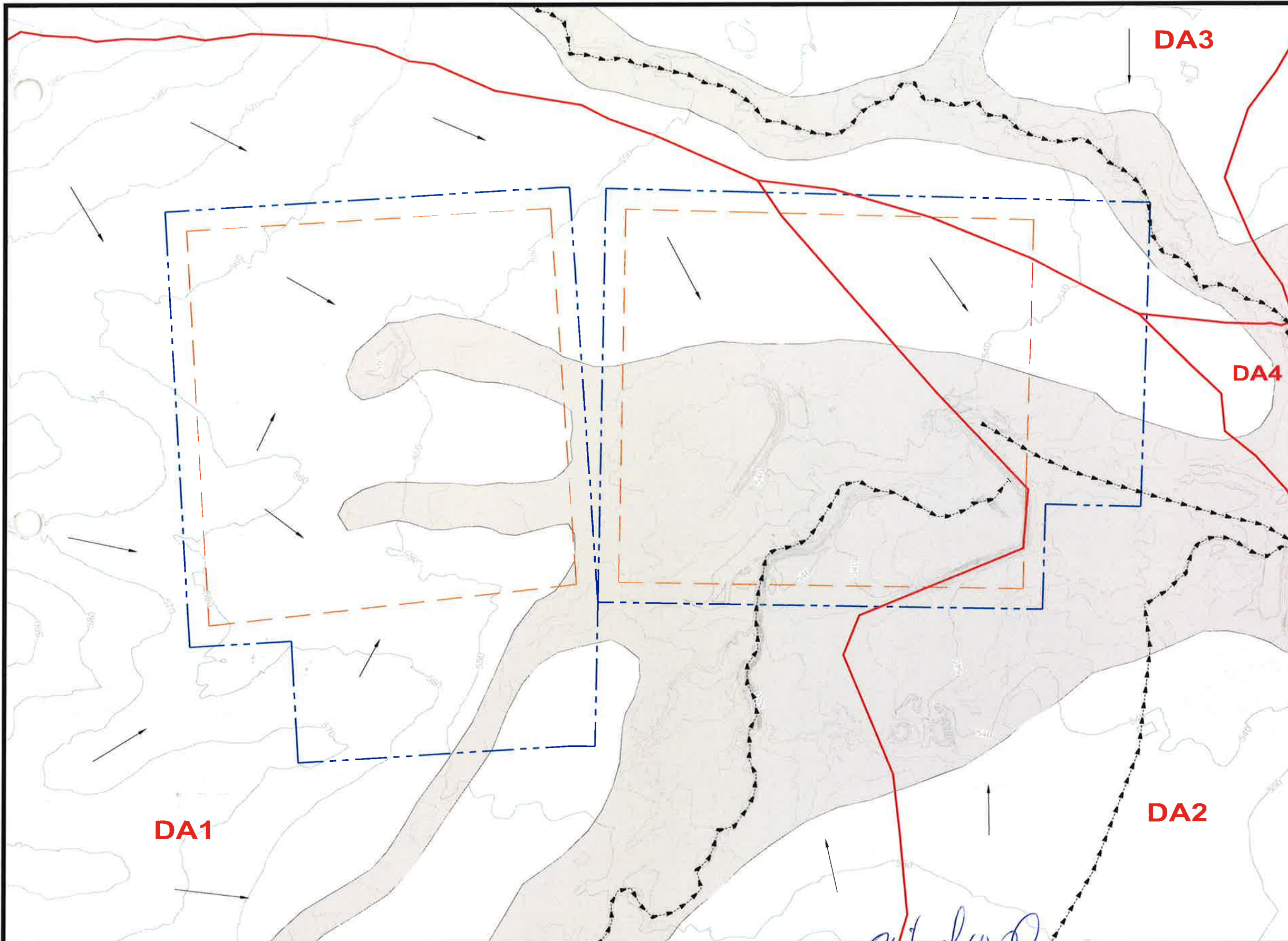
THIS DOCUMENT IS RELEASED FOR THE PURPOSE OF PERMITTING UNDER THE AUTHORITY OF MICHAEL W. ODEN, P.E. 67165.

9-18-2015

**PESCADITO ENVIRONMENTAL RESOURCE CENTER
WEBB COUNTY, TEXAS
MSW 2374**

**FACILITY SURFACE WATER DRAINAGE REPORT
PRE-DEVELOPMENT CONDITIONS - REGIONAL OVERVIEW**

PROJ. NO.:	148866	DATE:	APRIL 2015
DESIGNED BY:	-	DRAWING NO.:	III C.2-1
DRAWN BY:	MTE		
CHECKED BY:	RDS		
APPROVED BY:	MWO		1 OF 15 SHEETS



LEGEND

- - - - PERMIT BOUNDARY
- - - - WASTE UNIT BOUNDARY
- PRE-DEVELOPMENT SUBCATCHMENT BOUNDARIES
- - - - - STORMWATER FLOW PATH
- > STORMWATER FLOW DIRECTION
- 100-YEAR FLOODPLAIN (PRE-CLOMR)

NOTES

1. EXISTING CONTOURS DEVELOPED FROM SITE AERIAL TOPOGRAPHIC SURVEY BY DALLAS AERIAL SURVEYS ON FEBRUARY 15, 2010.
2. BOUNDARY AND IMPROVEMENT SURVEY DEVELOPED BY MEJIA ENGINEERING COMPANY ON AUGUST 15, 2011 AND JUNE 9, 2014.
3. FOR CLARITY, NOT ALL SITE FEATURES MAY BE SHOWN.
4. THE NEED FOR FLEXIBILITY TO ACCOMMODATE ADJUSTMENTS AND MODIFICATIONS IS ANTICIPATED CONSIDERING THE SIZE, COMPLEXITY, AND LIFE OF THE PROJECT.
5. "DRAINAGE AREAS" (DA) ARE TAKEN FROM THE CONDITIONAL LETTER OF MAP REVISION, PREPARED BY CB&I ENVIRONMENTAL AND INFRASTRUCTURE, INC. APPROVED NOVEMBER 21, 2014.

REV. NO.	DATE	DESCRIPTION
1	9/2015	NOD 1

CBI CB&I Environmental & Infrastructure, Inc.
 TBPE FIRM F-5650

CB&I Environmental and Infrastructure, Inc. has prepared this document for a specific project or purpose. All information contained within this document is copyrighted and remains intellectual property of CB&I Environmental and Infrastructure, Inc. This document may not be used or copied, in part or in whole, for any reason without expressed written consent by CB&I Environmental and Infrastructure, Inc.

Michael W. Oden

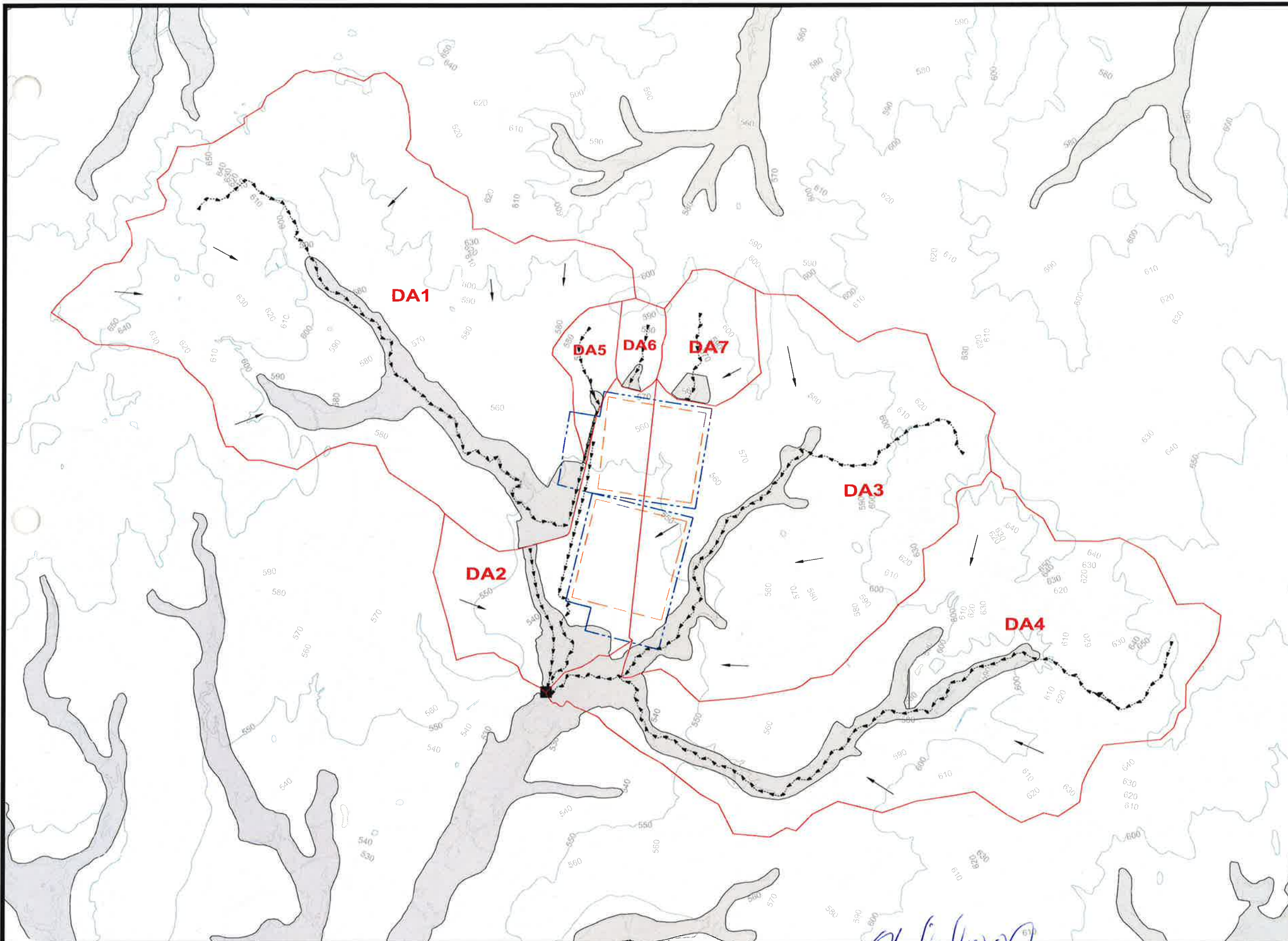
THIS DOCUMENT IS RELEASED FOR THE PURPOSE OF PERMITTING UNDER THE AUTHORITY OF MICHAEL W. ODEN, P.E. 67165.

9-18-2015

**PESCADITO ENVIRONMENTAL RESOURCE CENTER
 WEBB COUNTY, TEXAS
 MSW 2374**

**FACILITY SURFACE WATER DRAINAGE REPORT
 PREDEVELOPMENT CONDITIONS
 FACILITY AND IMMEDIATE SURROUNDINGS**

PROJ. NO.:	148866	DATE:	APRIL 2015
DESIGNED BY:	-	DRAWING NO.:	III
DRAWN BY:	MTE		C.2-2
CHECKED BY:	RDS		
APPROVED BY:	MWO		2 OF 15 SHEETS



LEGEND

- PERMIT BOUNDARY
- WASTE UNIT BOUNDARY
- INTERMEDIATE CONDITION SUBCATCHMENT BOUNDARIES
- STORMWATER FLOW PATH
- STORMWATER FLOW DIRECTION
- JUNCTION 1 (SEE NOTE 5)
- CLOMR 100-YEAR FLOODPLAIN

NOTES

1. CONTOURS ADAPTED FROM TEXAS NATURAL RESOURCE INFORMATION SYSTEM "TEXAS ELEVATION FRAMEWORK (HYPSOGRAPHY)" QUADRANGLES.
2. BOUNDARY AND IMPROVEMENT SURVEY DEVELOPED BY MEJIA ENGINEERING COMPANY ON AUGUST 15, 2011 AND JUNE 9, 2014.
3. FOR CLARITY, NOT ALL SITE FEATURES MAY BE SHOWN.
4. THE NEED FOR FLEXIBILITY TO ACCOMMODATE ADJUSTMENTS AND MODIFICATIONS IS ANTICIPATED CONSIDERING THE SIZE, COMPLEXITY, AND LIFE OF THE PROJECT.
5. JUNCTION 1 REPRESENTS THE MOST DOWNSTREAM ELEMENT WITHIN THE STORMWATER MODELS AND IS THE MAIN POINT OF COMPARISON BETWEEN MODELS.
6. "DRAINAGE AREAS" (DA) ARE TAKEN FROM THE CONDITIONAL LETTER OF MAP REVISION, PREPARED BY CB&I ENVIRONMENTAL AND INFRASTRUCTURE, INC. APPROVED NOVEMBER 21, 2014.

REV. NO.	DATE	DESCRIPTION
1	9/2015	NOD 1

CB&I Environmental & Infrastructure, Inc.
 TBPE FIRM F-5650

CB&I Environmental and Infrastructure, Inc. has prepared this document for a specific project or purpose. All information contained within this document is copyrighted and remains the property of CB&I Environmental and Infrastructure, Inc. This document may not be used or copied, in part or in whole, for any reason without expressed written consent by CB&I Environmental and Infrastructure, Inc.

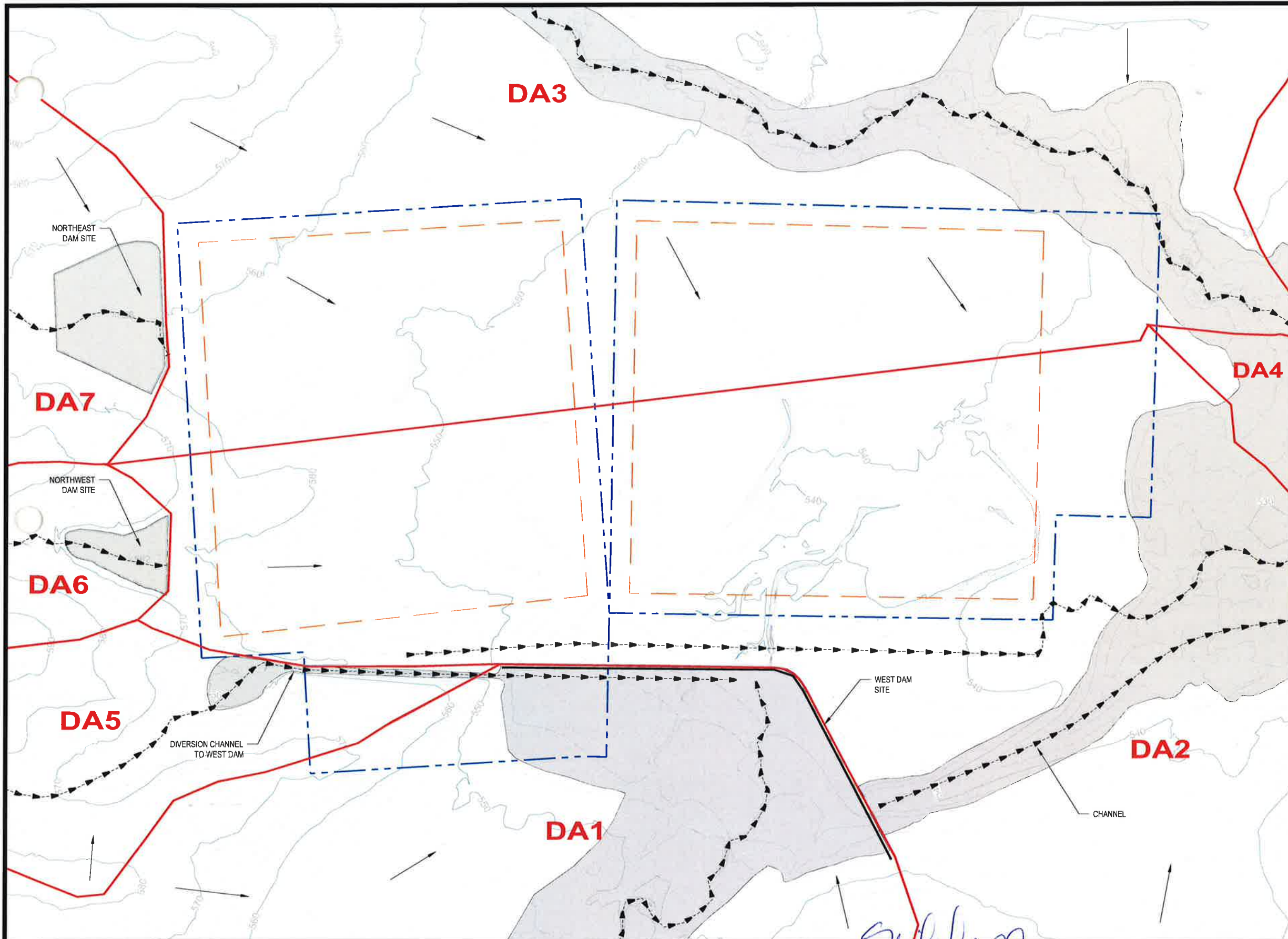
STATE OF TEXAS
MICHAEL W. ODEN
 67165
 REGISTERED PROFESSIONAL ENGINEER

Michael W. Oden
 7-78-2015

PESCADITO ENVIRONMENTAL RESOURCE CENTER
WEBB COUNTY, TEXAS
MSW 2374

FACILITY SURFACE WATER DRAINAGE REPORT
INTERMEDIATE DEVELOPMENT CONDITIONS - REGIONAL OVERVIEW

PROJ. NO.:	148866	DATE:	APRIL 2015
DESIGNED BY:	-	DRAWING NO.:	III
DRAWN BY:	MTE		C.2-3
CHECKED BY:	RDS		
APPROVED BY:	MWO		3 OF 15 SHEETS



LEGEND

- PERMIT BOUNDARY
- WASTE UNIT BOUNDARY
- INTERMEDIATE CONDITIONS SUBCATCHMENT BOUNDARIES
- - - - - STORMWATER FLOW PATH
- STORMWATER FLOW DIRECTION
- CLOMR 100-YEAR FLOODPLAIN

NOTES

1. EXISTING CONTOURS DEVELOPED FROM SITE AERIAL TOPOGRAPHIC SURVEY BY DALLAS AERIAL SURVEYS ON FEBRUARY 15, 2010 (MODIFIED TO INCLUDE CLOMR IMPROVEMENTS).
2. BOUNDARY AND IMPROVEMENT SURVEY DEVELOPED BY MEJIA ENGINEERING COMPANY ON AUGUST 15, 2011 AND JUNE 9, 2014.
3. FOR CLARITY, NOT ALL SITE FEATURES MAY BE SHOWN.
4. THE NEED FOR FLEXIBILITY TO ACCOMMODATE ADJUSTMENTS AND MODIFICATIONS IS ANTICIPATED CONSIDERING THE SIZE, COMPLEXITY, AND LIFE OF THE PROJECT.
5. "DRAINAGE AREAS" (DA) ARE TAKEN FROM THE CONDITIONAL LETTER OF MAP REVISION, PREPARED BY CB&I ENVIRONMENTAL AND INFRASTRUCTURE, INC. APPROVED NOVEMBER 21, 2014.

REV. NO.	DATE	DESCRIPTION
1	9/2015	NOD 1

CBI CB&I Environmental & Infrastructure, Inc.
 TBPE FIRM F-5650

CB&I Environmental and Infrastructure, Inc. has prepared this document for a specific project or purpose. All information contained within this document is copyrighted and remains the intellectual property of CB&I Environmental and Infrastructure, Inc. This document may not be used or copied, in part or in whole, for any reason without expressed written consent by CB&I Environmental and Infrastructure, Inc.



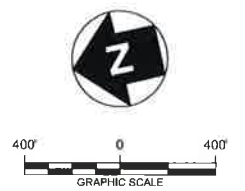
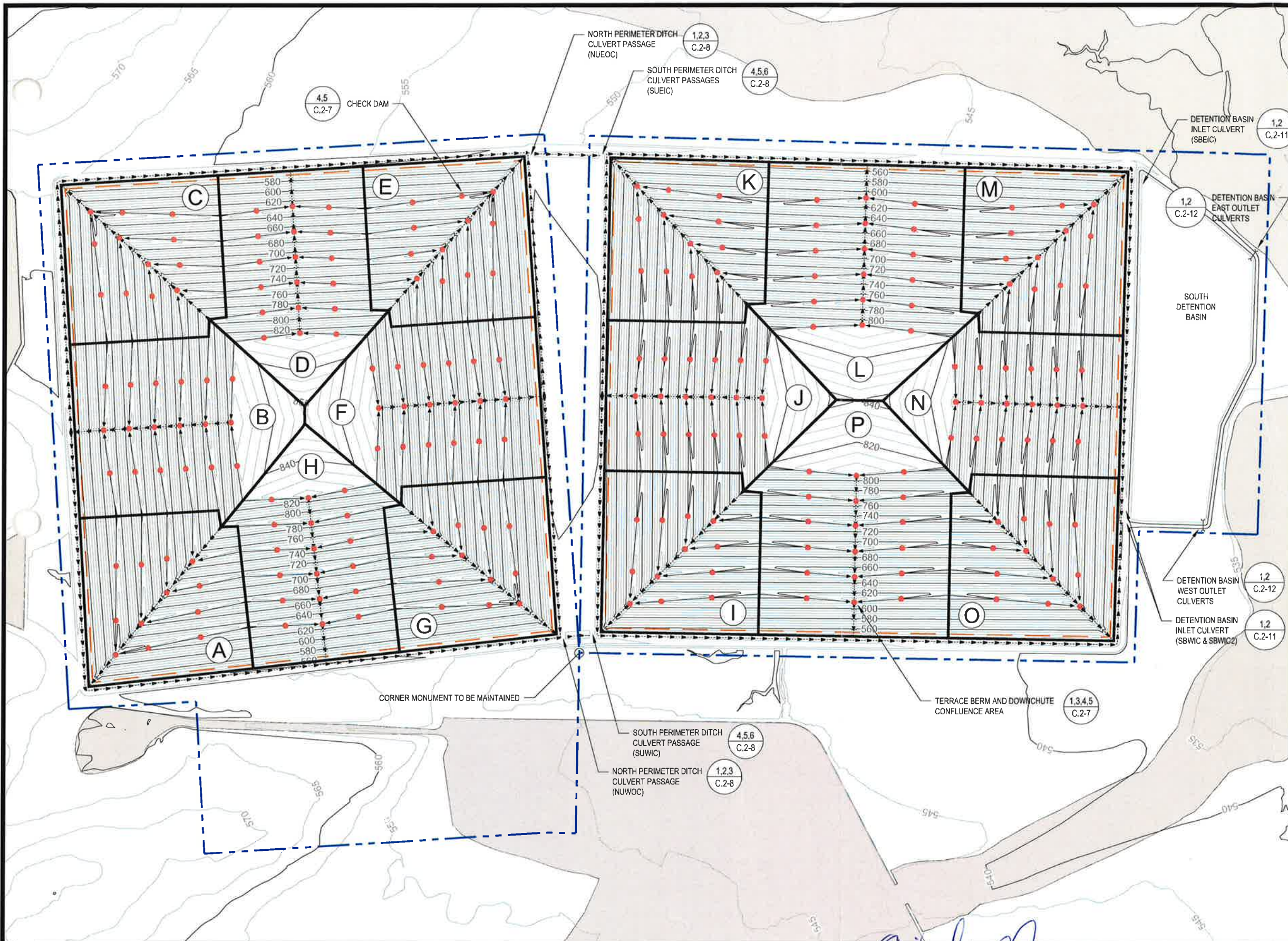
THIS DOCUMENT IS RELEASED FOR THE PURPOSE OF PERMITTING UNDER THE AUTHORITY OF MICHAEL W. ODEN, P.E. 67165.

Michael W. Oden
 9-18-2015

**PESCADITO ENVIRONMENTAL RESOURCE CENTER
 WEBB COUNTY, TEXAS
 MSW 2374**

**FACILITY SURFACE WATER DRAINAGE REPORT
 INTERMEDIATE DEVELOPMENT CONDITIONS
 FACILITY AND IMMEDIATE SURROUNDINGS**

PROJ. NO.: 148866	DATE: APRIL 2015
DESIGNED BY: -	DRAWING NO. III
DRAWN BY: MTE	C.2-4
CHECKED BY: RDS	4 OF 13 SHEETS
APPROVED BY: MWO	



LEGEND

- PERMIT BOUNDARY
- WASTE UNIT BOUNDARY
- TERRACE BERM (FLOW DIRECTION SHOWN)
- DOWNCHUTE AND PERIMETER DITCH (FLOW DIRECTION SHOWN)
- A CATCHMENT IDENTIFICATION
- CLOMR 100-YEAR FLOODPLAIN
- CHECK DAM LOCATION

NOTES

1. EXISTING CONTOURS DEVELOPED FROM SITE AERIAL TOPOGRAPHIC SURVEY BY DALLAS AERIAL SURVEYS ON FEBRUARY 15, 2010 (MODIFIED TO INCLUDE CLOMR IMPROVEMENTS).
2. BOUNDARY AND IMPROVEMENT SURVEY DEVELOPED BY MEJIA ENGINEERING COMPANY ON AUGUST 15, 2011 AND JUNE 9, 2014.
3. FOR CLARITY, NOT ALL SITE FEATURES MAY BE SHOWN.
4. THE NEED FOR FLEXIBILITY TO ACCOMMODATE ADJUSTMENTS AND MODIFICATIONS IS ANTICIPATED CONSIDERING THE SIZE, COMPLEXITY, AND LIFE OF THE PROJECT.
5. REFER TO APPENDIX III-C.3-2 FOR DETAILED SUBCATCHMENT DELINEATION FOR EACH CATCHMENT AREA SHOWN ON THIS DRAWING.

REV. NO.	DATE	DESCRIPTION
1	9/2015	NOD 1

CBI CB&I Environmental & Infrastructure, Inc.
 TBPE FIRM F-5650
CB&I Environmental and Infrastructure, Inc. has prepared this document for a specific project or purpose. All information contained within this document is copyrighted and remains the intellectual property of CB&I Environmental and Infrastructure, Inc. The document may not be used or copied, in part or in whole, for any reason without expressed written consent by CB&I Environmental and Infrastructure, Inc.

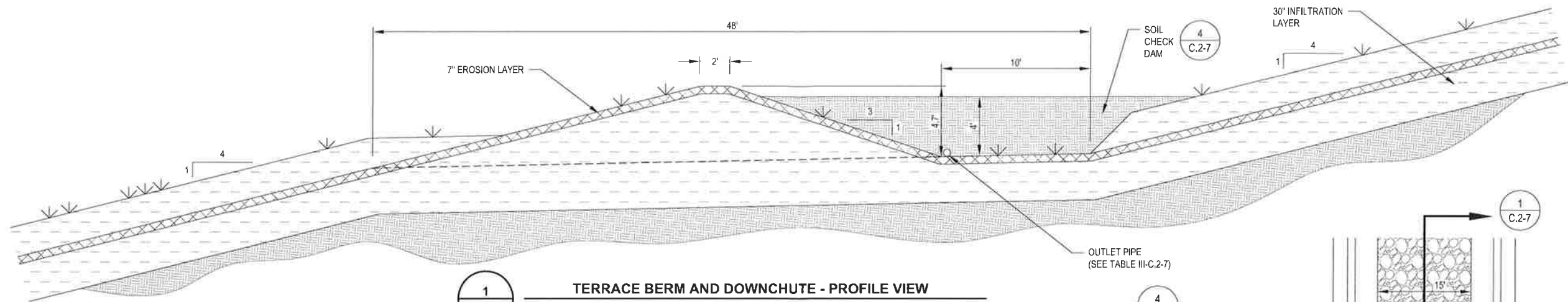
Michael W. Oden

THIS DOCUMENT IS RELEASED FOR THE PURPOSE OF PERMITTING UNDER THE AUTHORITY OF MICHAEL W. ODEN, P.E. 67165.
 9-18-2015

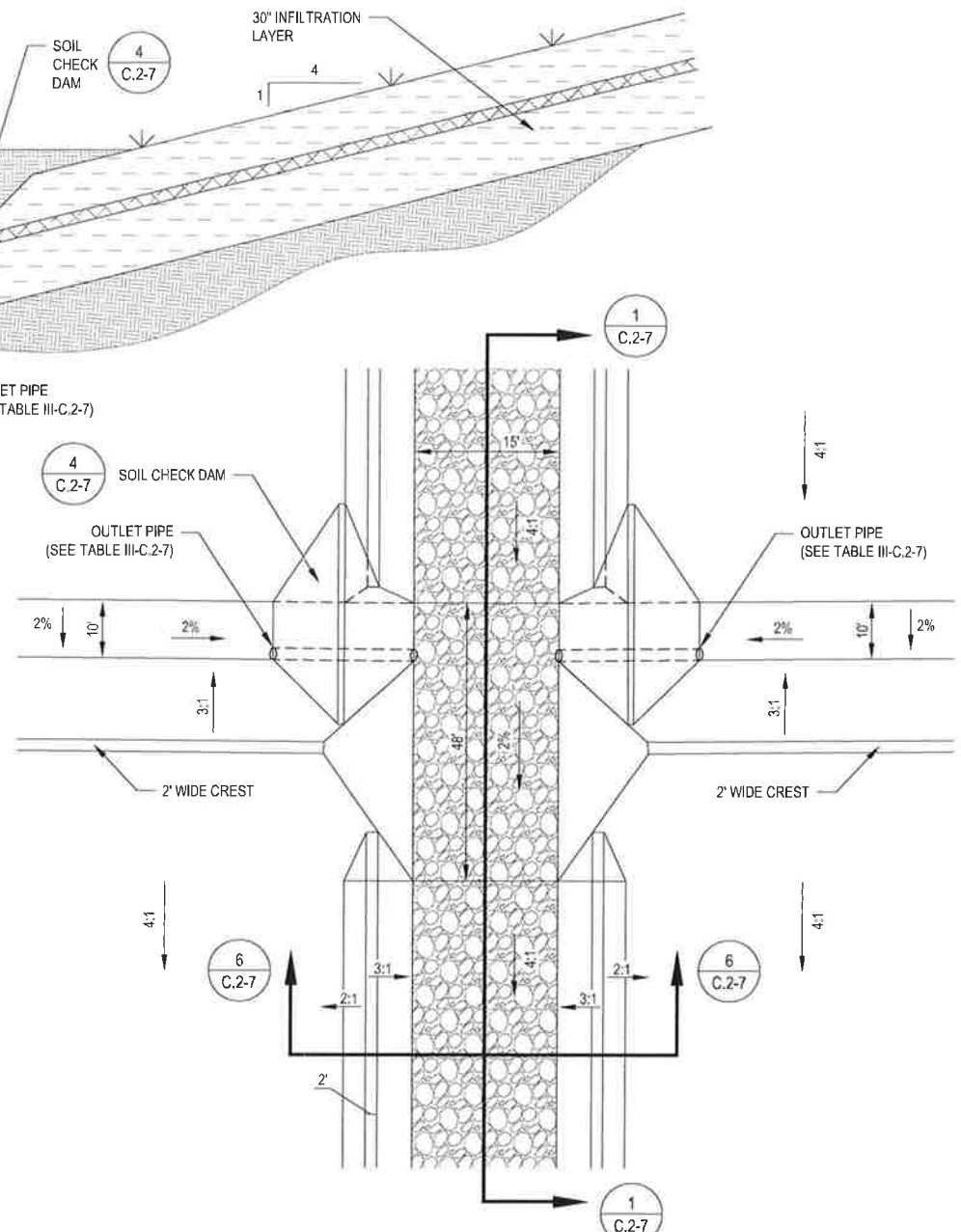
**PESCADITO ENVIRONMENTAL RESOURCE CENTER
 WEBB COUNTY, TEXAS
 MSW 2374**

**FACILITY SURFACE WATER DRAINAGE REPORT
 POST-DEVELOPMENT STORMWATER FEATURE OVERVIEW**

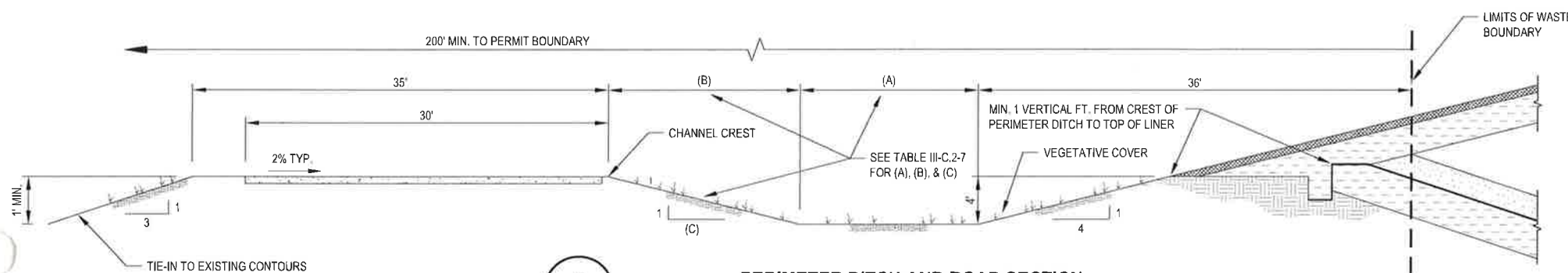
PROJ. NO.:	148866	DATE:	APRIL 2015
DESIGNED BY:		DRAWING NO.:	III
DRAWN BY:	MTE		C.2-6
CHECKED BY:	RDS		6 OF 13 SHEETS
APPROVED BY:	MWO		



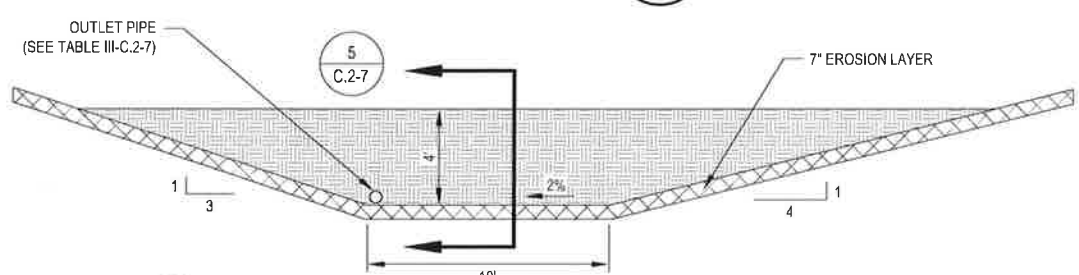
1
C.2-7
TERRACE BERM AND DOWNCHUTE - PROFILE VIEW
NOT TO SCALE



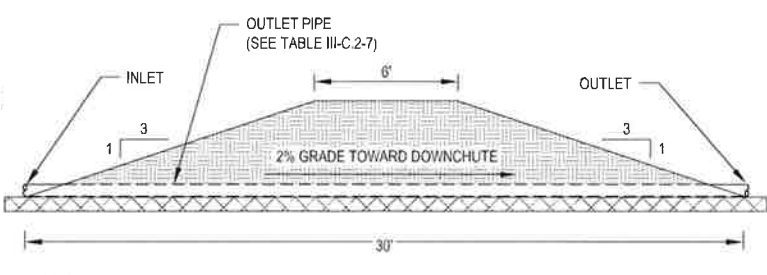
3
C.2-7
TERRACE BERM AND DOWNCHUTE - PLAN VIEW
NOT TO SCALE



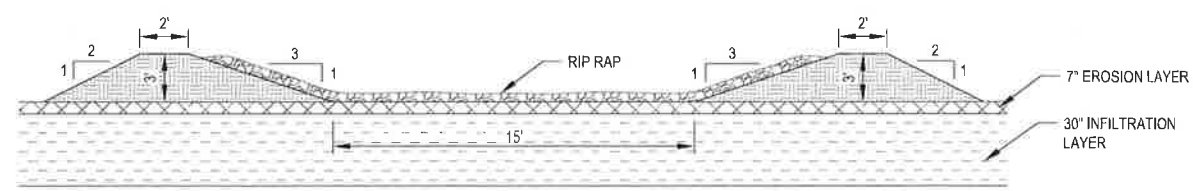
2
C.2-7
PERIMETER DITCH AND ROAD SECTION
NOT TO SCALE



4
C.2-7
TYPICAL SOIL CHECK DAM PROFILE
NOT TO SCALE



5
C.2-7
TYPICAL SOIL CHECK DAM SECTION
NOT TO SCALE



6
C.2-7
TYPICAL DOWNCHUTE SECTION
NOT TO SCALE

TABLE III-C.2-7			
DETAIL CALLOUT	OBJECT	NORTH UNIT SIZE	SOUTH UNIT SIZE
2	(A)	15'	40'
2	(B)	16'	12'
2	(C)	4'	3'
3	OUTLET PIPE	14"	7"
4	OUTLET PIPE	14"	7"
5	OUTLET PIPE	14"	7"

REV. NO.	DATE	DESCRIPTION
1	9/2015	NOD 1

CBI CB&I Environmental & Infrastructure, Inc.
TBPE FIRM F-5650

Michael W. Oden

STATE OF TEXAS
MICHAEL W. ODEN
67165
REGISTERED PROFESSIONAL ENGINEER

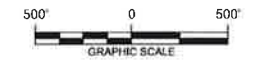
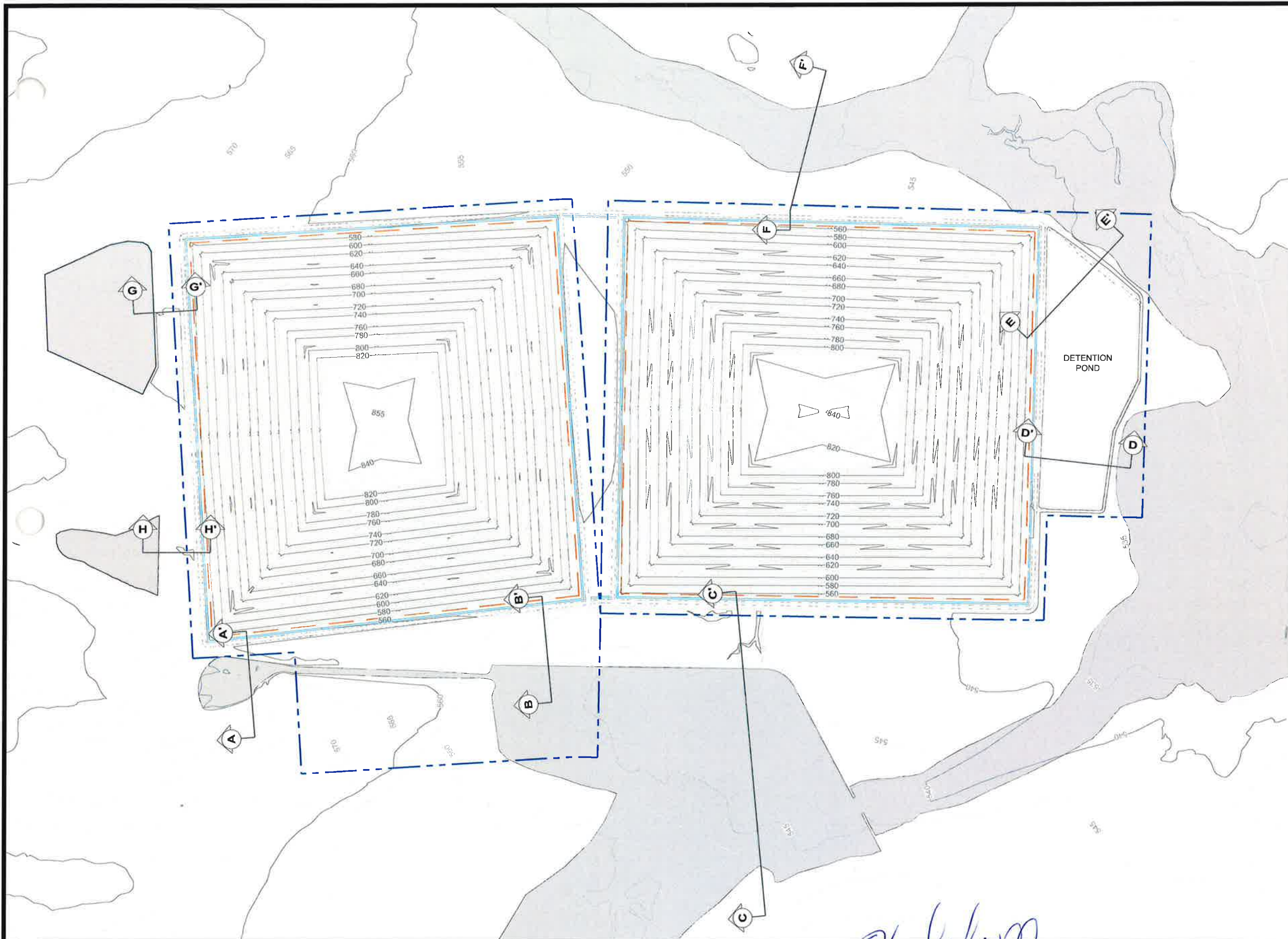
THIS DOCUMENT IS RELEASED FOR THE PURPOSE OF PERMITTING UNDER THE AUTHORITY OF MICHAEL W. ODEN, P.E. 67165.

9-18-2015

**PESCADITO ENVIRONMENTAL RESOURCE CENTER
WEBB COUNTY, TEXAS
MSW 2374**

**FACILITY SURFACE WATER DRAINAGE REPORT
TERRACE BERM, DOWNCHUTE, AND PERIMETER CHANNEL DETAILS**

PROJ. NO.:	148866	DATE:	APRIL 2015
DESIGNED BY:	-	DRAWING NO.:	III C.2-7
DRAWN BY:	MTE	CHECKED BY:	RDS
APPROVED BY:	MWO		7 OF 15 SHEETS



LEGEND

- PERMIT BOUNDARY
- WASTE BOUNDARY
- PERIMETER DITCH
- PERIMETER ACCESS ROAD
- CLOMR 100-YEAR FLOODPLAIN

NOTES

1. CROSS SECTIONS SHOW THE LOCATION AND ELEVATION OF THE APPROVED 100-YEAR FLOODPLAIN IN RELATION TO THE CREST OF THE PERIMETER DITCH (ROAD) AND TOP OF LINER.

REV. NO.	DATE	DESCRIPTION
0	9/2015	NOD 1

CBI CB&I Environmental & Infrastructure, Inc.
 TBPE FIRM F-5650



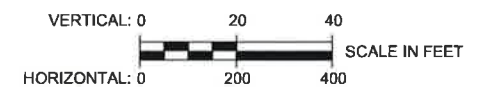
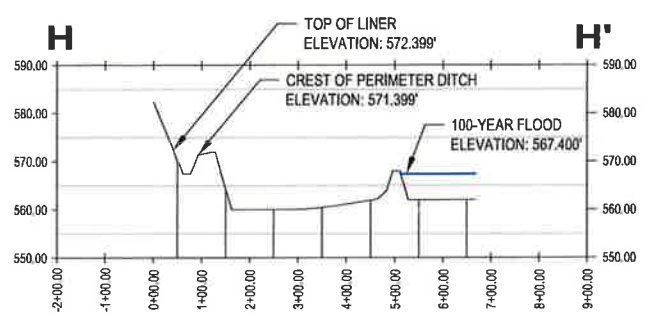
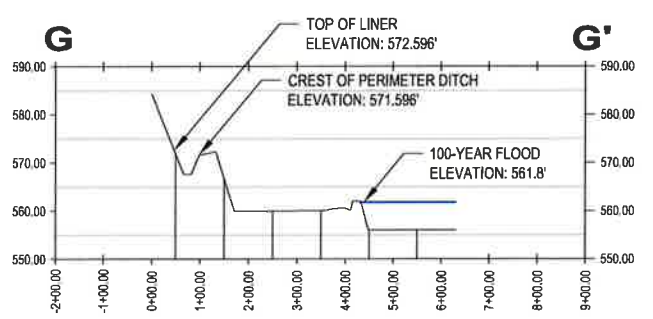
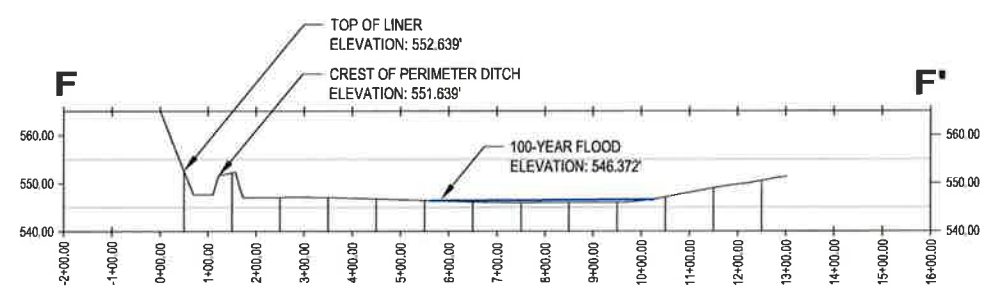
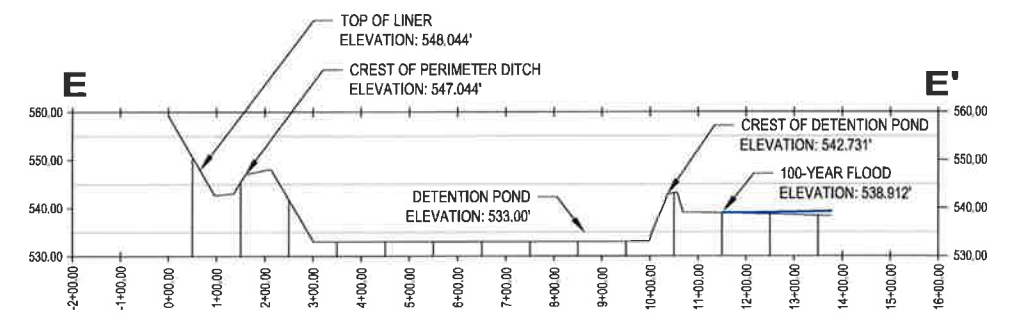
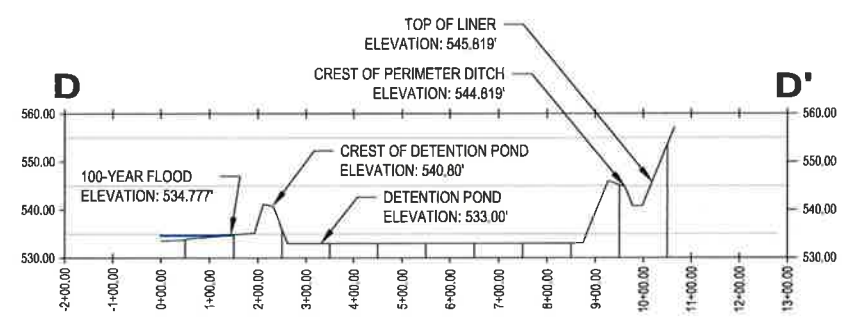
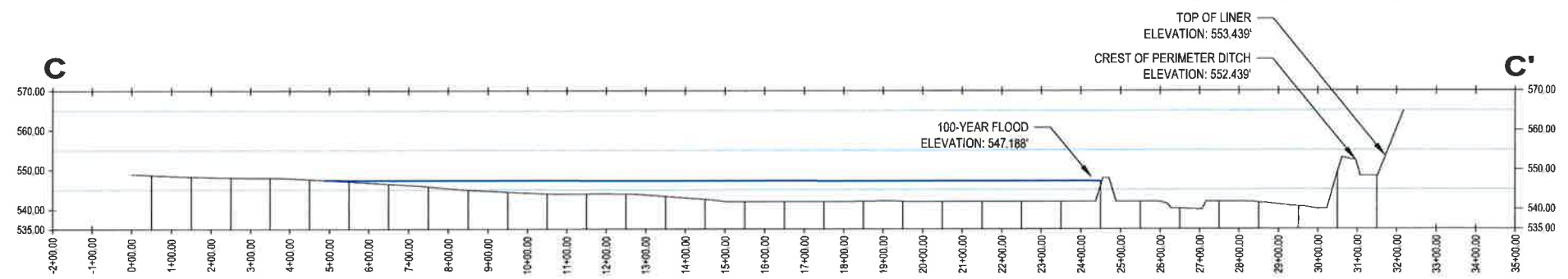
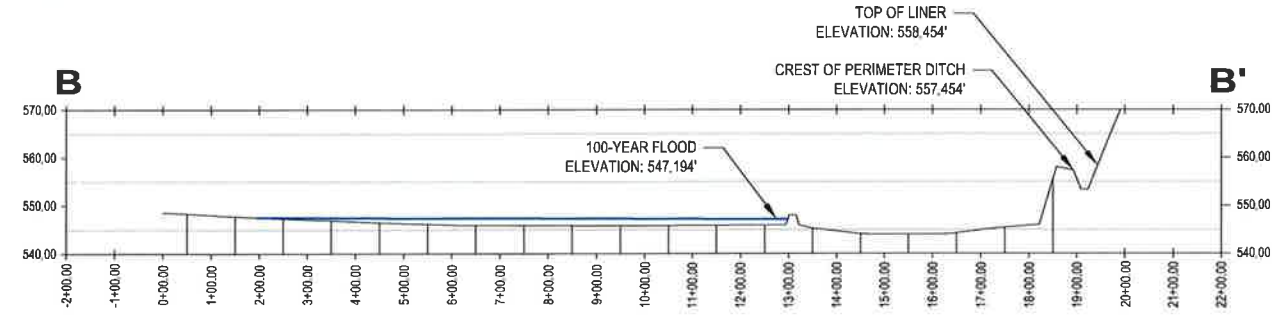
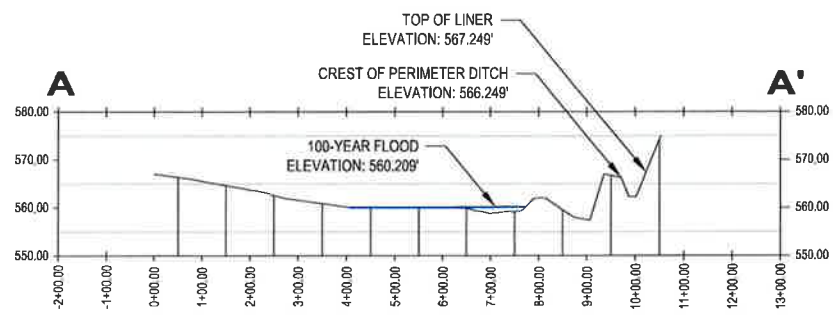
THIS DOCUMENT IS RELEASED FOR THE PURPOSE OF PERMITTING UNDER THE AUTHORITY OF MICHAEL W. ODEN, P.E. 67185.

9-18-2015

**PESCADITO ENVIRONMENTAL RESOURCE CENTER
 WEBB COUNTY, TEXAS
 MSW 2374**

**100-YEAR FLOODPLAIN CROSS SECTIONS
 PLAN VIEW**

PROJ. NO.: 148866	DATE: APRIL 2015
DESIGNED BY: -	DRAWING NO. III
DRAWN BY: MTE	C.2-14
CHECKED BY: RDS	14 OF 15 SHEETS
APPROVED BY: MWO	



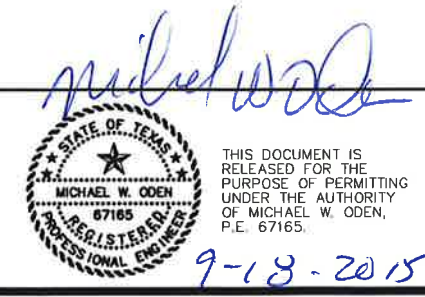
NOTES

- 1. SEE DRAWING III-C.2-14 FOR CROSS SECTION LOCATIONS

REV. NO.	DATE	DESCRIPTION
0	9/2015	NOD 1



CB&I Environmental and Infrastructure, Inc. has prepared this document for a specific project or purpose. All information contained within this document is copyrighted and remains the intellectual property of CB&I Environmental and Infrastructure, Inc. This document may not be used or copied, in part or in whole, for any reason without expressed written consent by CB&I Environmental and Infrastructure, Inc.



**PESCADITO ENVIRONMENTAL RESOURCE CENTER
 WEBB COUNTY, TEXAS
 MSW 2374**

**100 YEAR FLOODPLAIN CROSS SECTIONS
 PROFILE VIEW**

PROJ. NO.:	148866	DATE:	APRIL 2015
DESIGNED BY:	-	DRAWING NO.:	III C.2-15
DRAWN BY:	MTE		15 OF 15 SHEETS
CHECKED BY:	RDS		
APPROVED BY:	MWO		