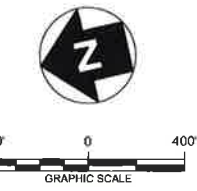
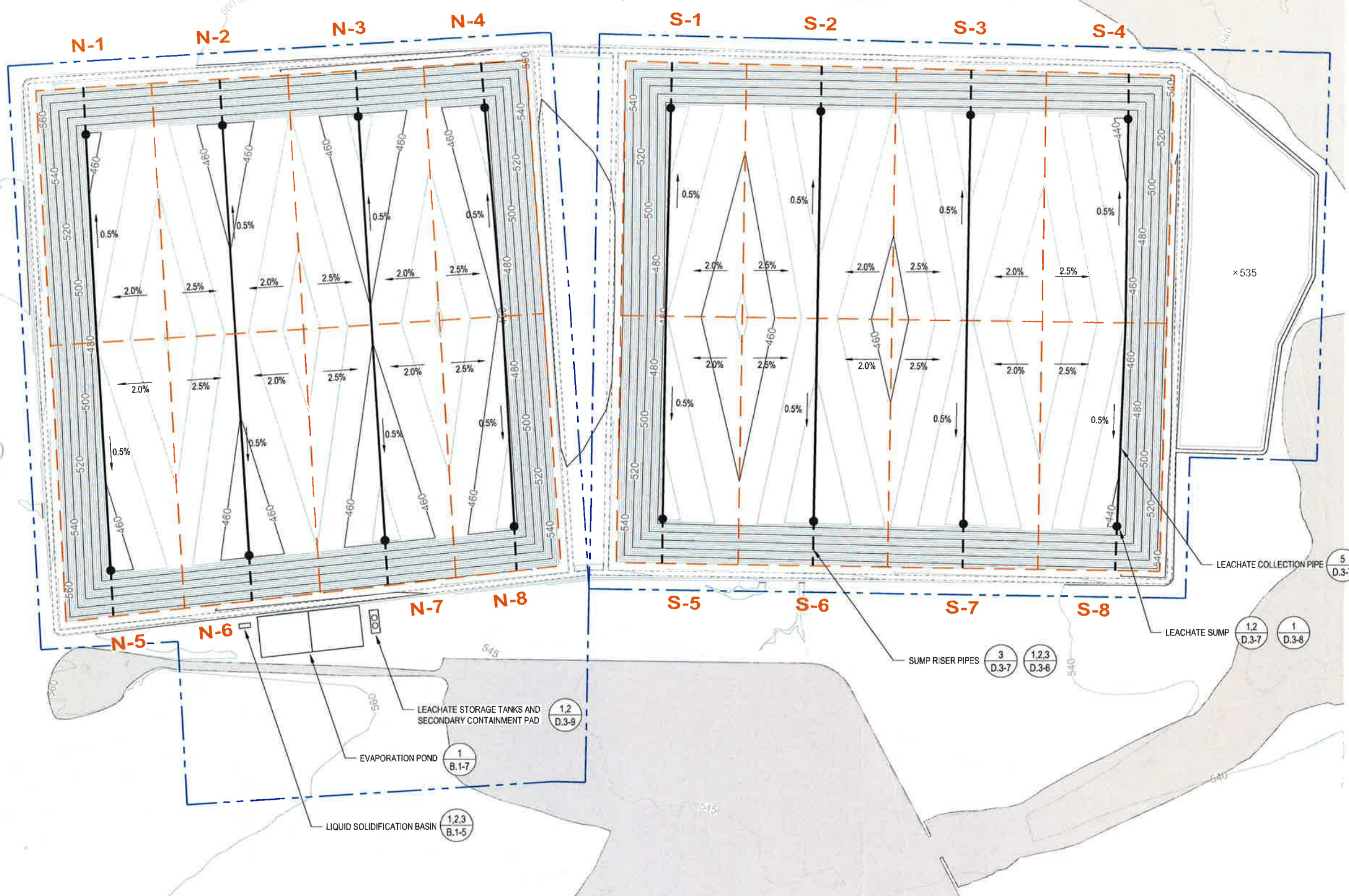


**Part III**

**Attachment III-D**

**Appendix III-D.3**

**No Redline Version for Title Page or TOC - Not previously  
provided**



- LEGEND**
- PERMIT BOUNDARY
  - WASTE UNIT BOUNDARY
  - PERIMETER ACCESS ROAD
  - 500 TOP OF LINER ELEVATION
  - CLOMR 100-YEAR FLOODPLAIN
  - LEACHATE COLLECTION PIPE
  - LEACHATE SUMP LOCATION
  - LEACHATE SUMP RISER PIPES

- NOTES**
1. EXISTING CONTOURS DEVELOPED FROM SITE AERIAL TOPOGRAPHIC SURVEY BY DALLAS AERIAL SURVEYS ON FEBRUARY 15, 2010.
  2. BOUNDARY AND IMPROVEMENT SURVEY DEVELOPED BY MEJIA ENGINEERING COMPANY ON AUGUST 15, 2011 AND JUNE 9, 2014.
  3. FOR CLARITY, NOT ALL SITE FEATURES MAY BE SHOWN.
  4. THE NEED FOR FLEXIBILITY TO ACCOMMODATE ADJUSTMENTS AND MODIFICATIONS IS ANTICIPATED CONSIDERING THE SIZE, COMPLEXITY, AND LIFE OF THE PROJECT.
  5. NOT ALL FACILITIES WILL BE CONSTRUCTED AT THE SAME TIME.
  6. ALL CELLS ARE DESIGNATED TO RECEIVE CLASS 1 WASTE. EACH CELL HAS A DEDICATED LEACHATE COLLECTION AND REMOVAL SYSTEM.

REV. NO.	DATE	DESCRIPTION
1	9/2015	NOD 1

**CBI** CB&I Environmental & Infrastructure, Inc.  
TBPE FIRM F-5650

THIS DOCUMENT IS RELEASED FOR THE PURPOSE OF PERMITTING UNDER THE AUTHORITY OF MICHAEL W. ODEN, P.E. 67165.

**PESCADITO ENVIRONMENTAL RESOURCE CENTER**  
**WEBB COUNTY, TEXAS**  
**MSW 2374**

**LEACHATE COLLECTION SYSTEM PLAN**

PROJ. NO.:	148866	DATE:	APRIL 2015
DESIGNED BY:	-	DRAWING NO.:	<b>III</b> <b>D.3-5</b>
DRAWN BY:	MTE		
CHECKED BY:	RDS		
APPROVED BY:	MWO		5 OF 11 SHEETS

CB&I Environmental and Infrastructure, Inc. has prepared this document for a specific project or purpose. All information contained within this document is copyrighted and remains intellectual property of CB&I Environmental and Infrastructure, Inc. This document may not be used or copied, in part or in whole, for any reason without expressed written consent by CB&I Environmental and Infrastructure, Inc.