

Changed Pages
Part III, Appendix III-D.1
Site Layout Figures

**Part III
Attachment III-D
Appendix III-D.1**

SITE LAYOUT FIGURES

**Pescadito Environmental Resource Center
MSW No. 2374
Webb County, Texas**

PESCADITO
ENVIRONMENTAL RESOURCE CENTER

Initial Submittal March 2015
Revised September 2015
Revised November 2015
Technically Complete March 11, 2106
Modified August 2017

Prepared for:
Rancho Viejo Waste Management, LLC
1116 Calle del Norte
Laredo, TX 78041

Prepared by:
**APTIM Environmental &
Infrastructure, Inc.**
(f/k/a CB&I Environmental &
Infrastructure, Inc.)



**12005 Ford Rd, Suite 600
Dallas, TX 75234**

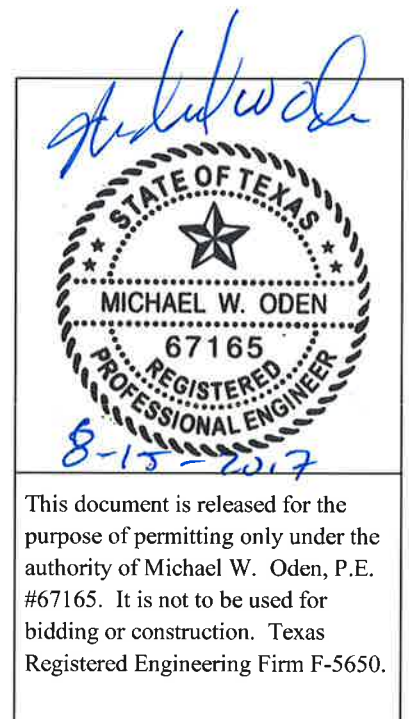



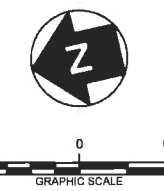
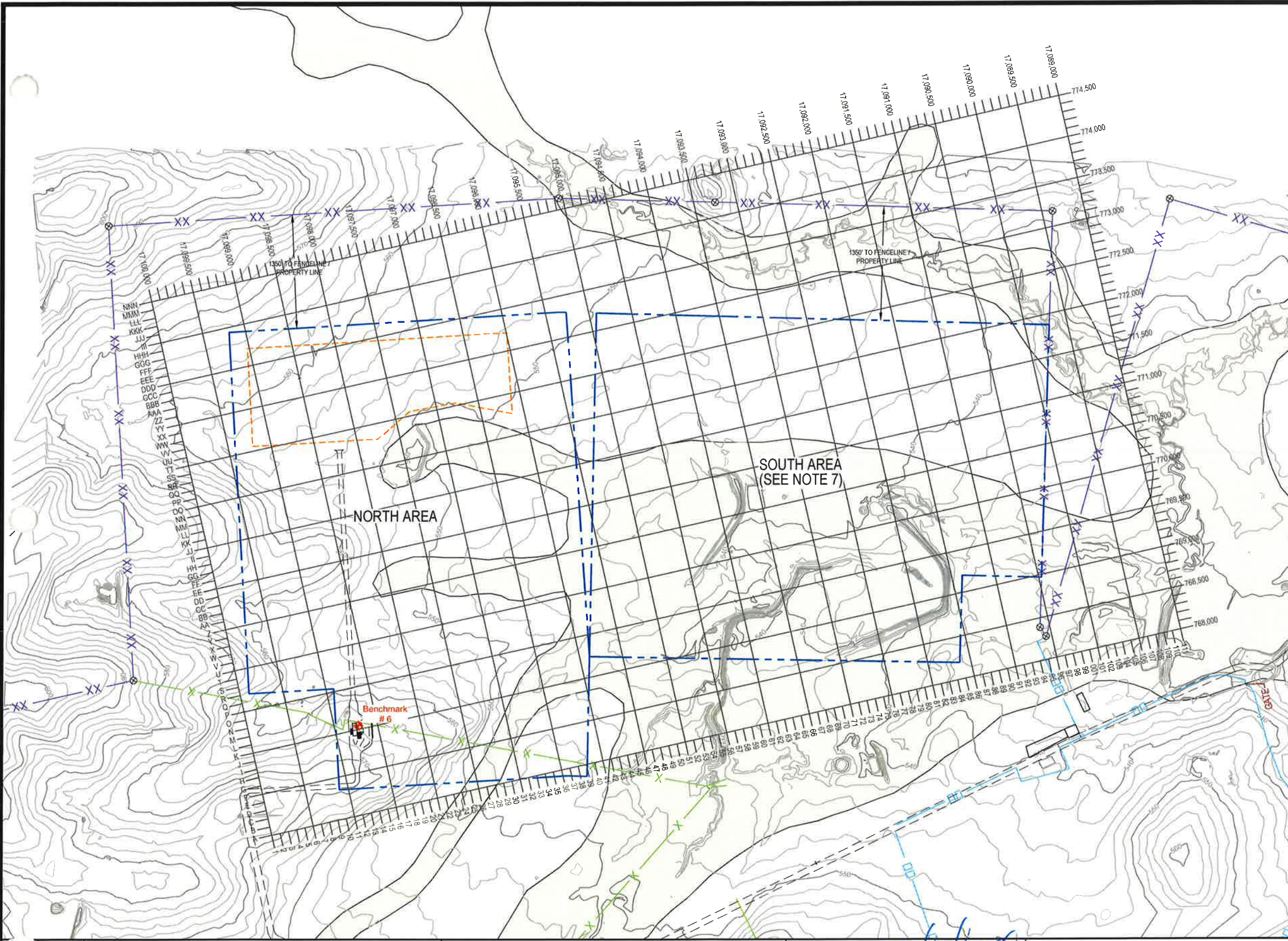
Table of Contents

III-D.1-1 General Site Plan	1
III-D.1-2 Site Layout Plan	2
III-D.1-3 Excavation Plan	3
III-D.1-4 Landfill Completion Plan	4
III-D.1-5 Entrance Facilities Plan	5
III-D.1-6 Entrance Road Details	6

8-15-2017



This document is released for the purpose of permitting only under the authority of Michael W. Oden, P.E. #67165. It is not to be used for bidding or construction. Texas Registered Engineering Firm F-5650.




LEGEND


- PERMIT BOUNDARY
- WASTE BOUNDARY
- ROAD
- XX PROPERTY LINE AND FENCE
- X FENCE
- 8' HOG FENCE
- 100-YEAR FLOODPLAIN (PER FIRM DATED APRIL 2, 2008, SEE NOTE 6)
- + BENCHMARK
 -NORTHING: 17,098,720.52 FT
 -EASTING: 769,044.16 FT
 -ELEVATION: 565.54 FT

NOTES

1. EXISTING CONTOURS DEVELOPED FROM SITE AERIAL TOPOGRAPHIC SURVEY BY DALLAS AERIAL SURVEYS ON FEBRUARY 15, 2010.
2. BOUNDARY AND IMPROVEMENT SURVEY DEVELOPED BY MEJIA ENGINEERING COMPANY ON AUGUST 15, 2011 AND JUNE 9, 2014.
3. FOR CLARITY, NOT ALL SITE FEATURES MAY BE SHOWN.
4. THE NEED FOR FLEXIBILITY TO ACCOMMODATE ADJUSTMENTS AND MODIFICATIONS IS ANTICIPATED CONSIDERING THE SIZE, COMPLEXITY, AND LIFE OF THE PROJECT.
5. GRID BASED ON NAD83 TEXAS STATE PLANE SOUTH ZONE (US FOOT) COORDINATE SYSTEM.
6. 100-YEAR FLOODPLAIN FROM FLOOD INSURANCE RATE MAP FOR WEBB COUNTY, TEXAS, MAP NO. 48479C1275C, DATED APRIL 2, 2008. A CLOMR THAT WOULD REMOVE A LARGE AREA OF THE 100-YEAR FLOODPLAIN WITHIN THE PERMIT BOUNDARY WAS APPROVED BY FEMA ON NOVEMBER 21, 2014; HOWEVER, THE CLOMR IMPROVEMENTS HAVE NOT BEEN CONSTRUCTED.
7. FUTURE WASTE PROCESSING OR DISPOSAL AREA SUBJECT TO PERMIT MODIFICATION OR AMENDMENT.

REV. NO.	DATE	DESCRIPTION
1	08/2017	REVISED WASTE UNIT BOUNDARY


APTIM Environmental & Infrastructure, Inc.
(f/r/a CB&I Environmental & Infrastructure, Inc.)
 TBPE FIRM F-5650
APTIM Environmental & Infrastructure, Inc. has prepared this document for a specific project or purpose. All information contained within this document is copyrighted and remains intellectual property of APTIM Environmental & Infrastructure, Inc. This document may not be used or copied, in part or in whole, for any reason without expressed written consent by APTIM Environmental & Infrastructure, Inc.

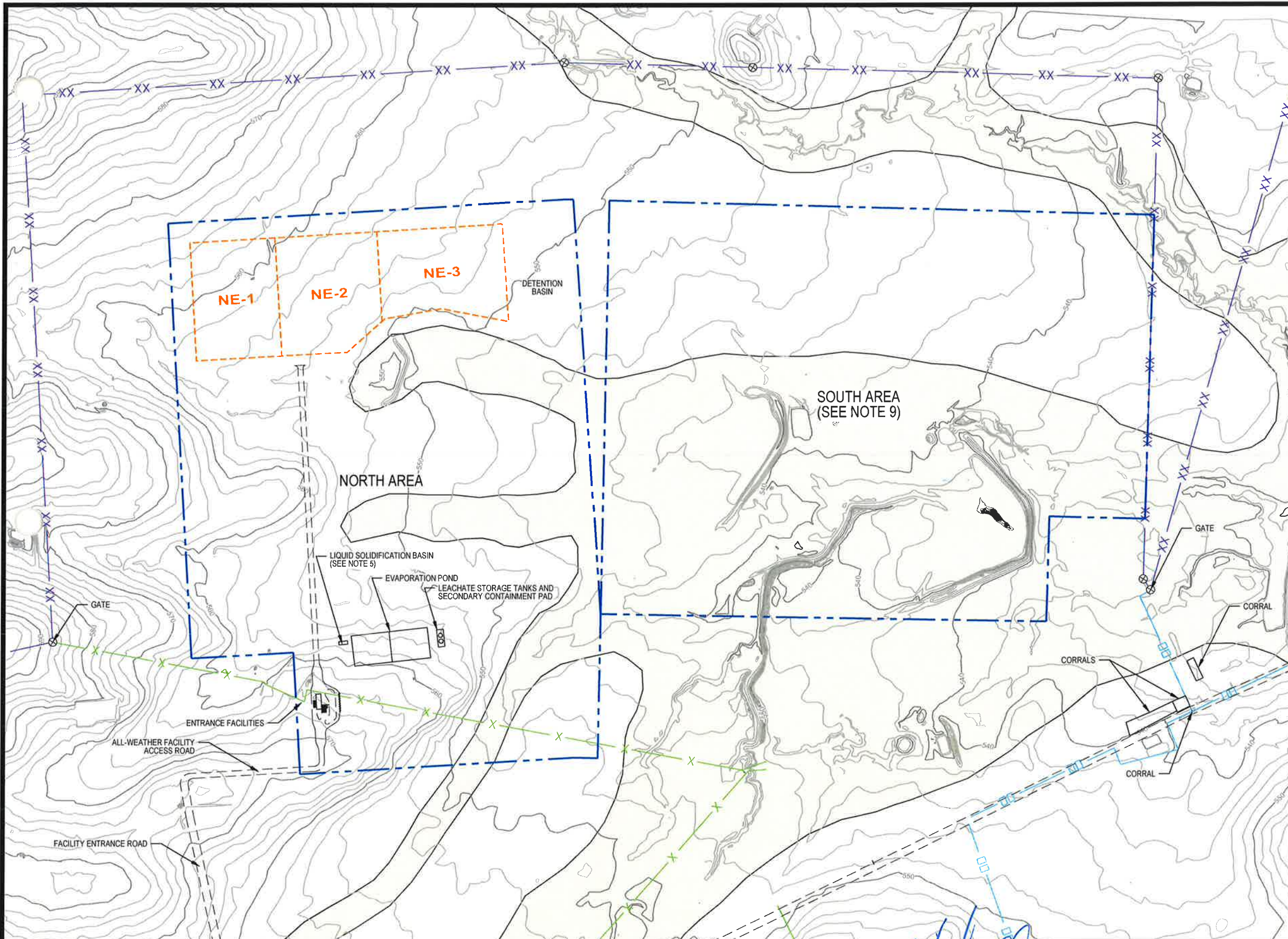


 THIS DOCUMENT IS RELEASED FOR THE PURPOSE OF PERMITTING UNDER THE AUTHORITY OF MICHAEL W. ODEN, P.E. 67165.
Michael W. Oden
 8-15-2017

PESCADITO ENVIRONMENTAL RESOURCE CENTER
WEBB COUNTY, TEXAS
MSW 2374

GENERAL SITE PLAN

PROJ. NO.:	148866	DATE:	AUGUST 2017
DESIGNED BY:	-	DRAWING NO.:	III
DRAWN BY:	MTE		D.1-1
CHECKED BY:	RDS		1 OF 6 SHEETS
APPROVED BY:	MWO		



LEGEND

- PERMIT BOUNDARY
- WASTE UNIT BOUNDARY
- DETENTION BASIN
- PERIMETER DITCH
- PERIMETER ACCESS ROAD
- XX PROPERTY LINE AND FENCE
- X FENCE
- 8' HOG FENCE
- 100-YEAR FLOODPLAIN (PER FIRM DATED APRIL 2, 2008, SEE NOTE 8)

NOTES

1. EXISTING CONTOURS DEVELOPED FROM SITE AERIAL TOPOGRAPHIC SURVEY BY DALLAS AERIAL SURVEYS ON FEBRUARY 15, 2010.
2. BOUNDARY AND IMPROVEMENT SURVEY DEVELOPED BY MEIJA ENGINEERING COMPANY ON AUGUST 15, 2011 AND JUNE 9, 2014.
3. FOR CLARITY, NOT ALL SITE FEATURES MAY BE SHOWN.
4. THE NEED FOR FLEXIBILITY TO ACCOMMODATE ADJUSTMENTS AND MODIFICATIONS IS ANTICIPATED CONSIDERING THE SIZE, COMPLEXITY, AND LIFE OF THE PROJECT.
5. LIQUID SOLIDIFICATION BASIN MAY BE IN THIS LOCATION OR IN AREAS WHERE WASTE HAS BEEN PLACED. REFER TO DRAWING III-B 1-7 FOR SOLIDIFICATION BASIN DETAIL.
6. ALL FACILITIES MAY NOT BE CONSTRUCTED AT THE SAME TIME.
7. ALL CELLS ARE DESIGNATED TO RECEIVE CLASS 1 WASTE. EACH CELL HAS A DEDICATED LEACHATE COLLECTION AND REMOVAL SYSTEM.
8. 100-YEAR FLOODPLAIN FROM FLOOD INSURANCE RATE MAP FOR WEBB COUNTY, TEXAS, MAP NO. 48479C1275C, DATED APRIL 2, 2008. A CLOMR THAT WOULD REMOVE A LARGE AREA OF THE 100-YEAR FLOODPLAIN WITHIN THE PERMIT BOUNDARY WAS APPROVED BY FEMA ON NOVEMBER 21, 2014; HOWEVER, THE CLOMR IMPROVEMENTS HAVE NOT BEEN CONSTRUCTED.
9. FUTURE WASTE PROCESSING OR DISPOSAL AREA SUBJECT TO PERMIT MODIFICATION OR AMENDMENT.

REV. NO.	DATE	DESCRIPTION
1	08/2017	REVISED WASTE UNIT BOUNDARY AND ENTRANCE

APTIM Environmental & Infrastructure, Inc.
 (f/k/a CB&I Environmental & Infrastructure, Inc.)
 TBPE FIRM F-5650

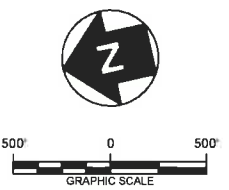
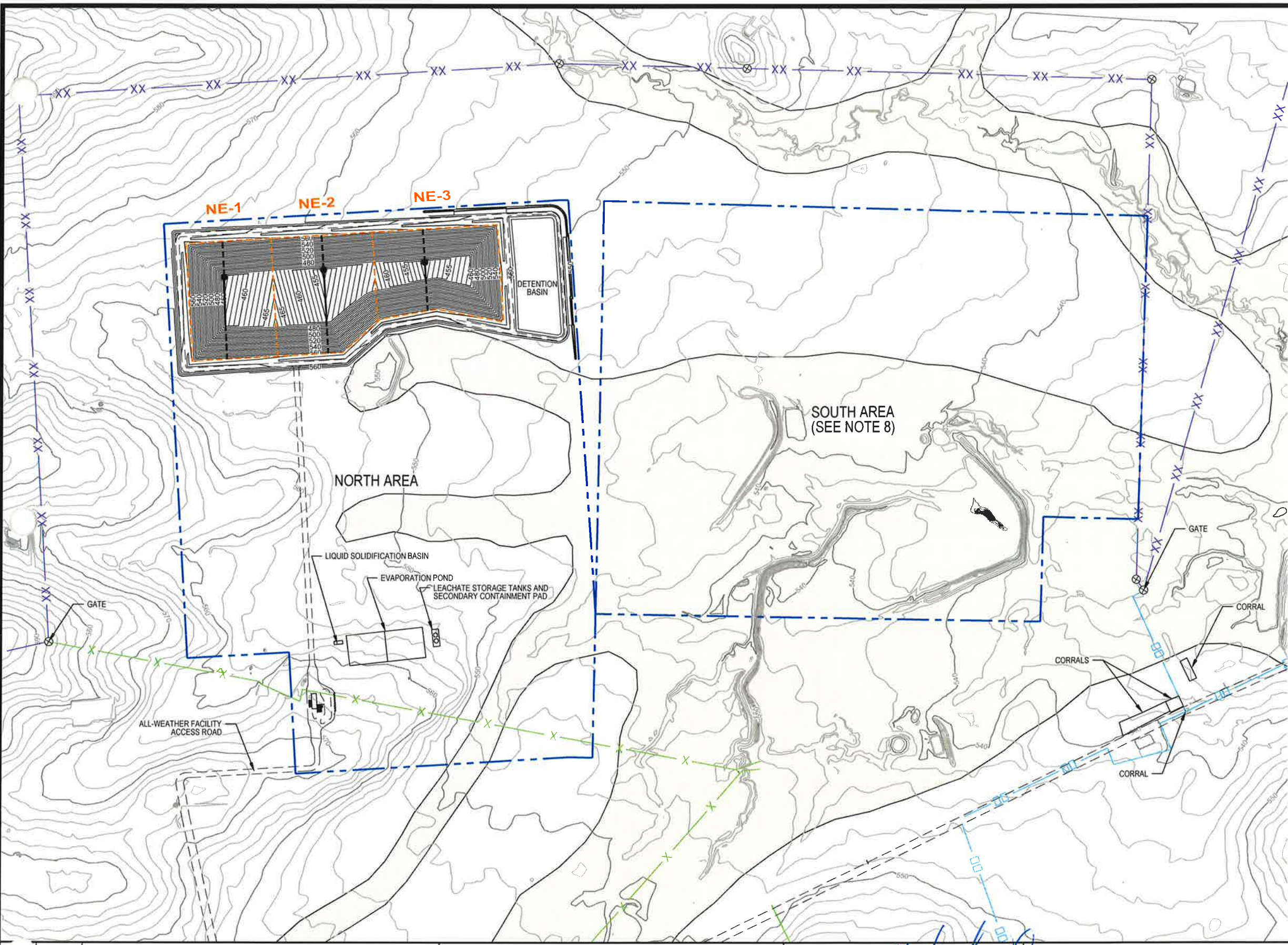
APTIM Environmental & Infrastructure, Inc. has prepared this document for a specific project or purpose. All information contained within this document is copyrighted and remains intellectual property of APTIM Environmental & Infrastructure, Inc. This document may not be used or copied, in part or in whole, for any reason without expressed written consent by APTIM Environmental & Infrastructure, Inc.

THIS DOCUMENT IS RELEASED FOR THE PURPOSE OF PERMITTING UNDER THE AUTHORITY OF MICHAEL W. ODEN, P.E. 67165.
8-15-2017

**PESCADITO ENVIRONMENTAL RESOURCE CENTER
 WEBB COUNTY, TEXAS
 MSW 2374**

SITE LAYOUT PLAN

PROJ. NO.:	148866	DATE:	AUGUST 2017
DESIGNED BY:	-	DRAWING NO.:	III
DRAWN BY:	MTE		D.1-2
CHECKED BY:	RDS		
APPROVED BY:	MWO		2 OF 6 SHEETS



LEGEND

- PERMIT BOUNDARY
- WASTE UNIT BOUNDARY
- DETENTION BASIN
- PERIMETER DITCH
- PERIMETER ACCESS ROAD
- XX PROPERTY LINE AND FENCE
- X FENCE
- 8' HOG FENCE
- 500 EXCAVATION ELEVATION
- 100-YEAR FLOODPLAIN (PER FIRM DATED APRIL 2, 2008, SEE NOTE 7)
- LEACHATE COLLECTION PIPE
- LEACHATE SUMP LOCATION
- LEACHATE SUMP RISER PIPES

NOTES

1. EXISTING CONTOURS DEVELOPED FROM SITE AERIAL TOPOGRAPHIC SURVEY BY DALLAS AERIAL SURVEYS ON FEBRUARY 15, 2010.
2. BOUNDARY AND IMPROVEMENT SURVEY DEVELOPED BY MEIJA ENGINEERING COMPANY ON AUGUST 15, 2011 AND JUNE 9, 2014.
3. FOR CLARITY, NOT ALL SITE FEATURES MAY BE SHOWN.
4. THE NEED FOR FLEXIBILITY TO ACCOMMODATE ADJUSTMENTS AND MODIFICATIONS IS ANTICIPATED CONSIDERING THE SIZE, COMPLEXITY, AND LIFE OF THE PROJECT.
5. EXCAVATION CONTOURS SHOWN REPRESENT BOTTOM OF THE 3' LINER FOR CLASS I CELLS. CELLS TO RECEIVE ONLY MUNICIPAL SOLID WASTE MAY HAVE 2' LINER.
6. SEE SHEET III-D-3-1 FOR TOP OF LINER ELEVATIONS.
7. 100-YEAR FLOODPLAIN FROM FLOOD INSURANCE RATE MAP FOR WEBB COUNTY, TEXAS, MAP NO. 48479C1275C, DATED APRIL 2, 2008. A CLOMR THAT WOULD REMOVE A LARGE AREA OF THE 100-YEAR FLOODPLAIN WITHIN THE PERMIT BOUNDARY WAS APPROVED BY FEMA ON NOVEMBER 21, 2014; HOWEVER, THE CLOMR IMPROVEMENTS HAVE NOT BEEN CONSTRUCTED.
8. FUTURE WASTE PROCESSING OR DISPOSAL AREA SUBJECT TO PERMIT MODIFICATION OR AMENDMENT.

REV. NO.	DATE	DESCRIPTION
1	08/2017	REVISED WASTE UNIT BOUNDARY

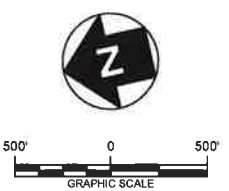
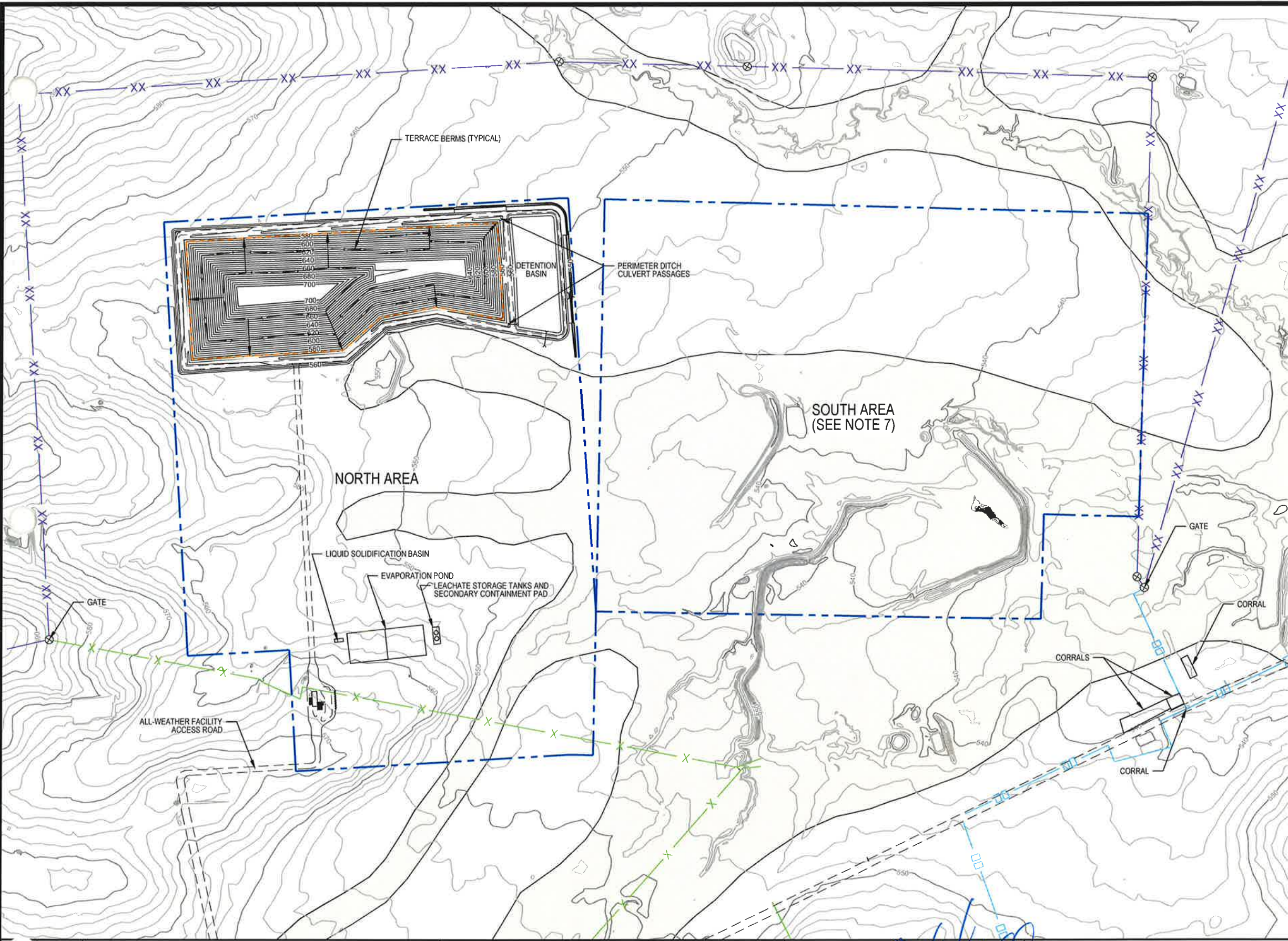
APTIM Environmental & Infrastructure, Inc.
(f/k/a CB&I Environmental & Infrastructure, Inc.)
 TBPE FIRM F-5650
 APTIM Environmental & Infrastructure, Inc. has prepared this document for a specific project or purpose. All information contained within this document is copyrighted and remains intellectual property of APTIM Environmental & Infrastructure, Inc. This document may not be used or copied, in part or in whole, for any reason without expressed written consent by APTIM Environmental & Infrastructure, Inc.

STATE OF TEXAS
 REGISTERED PROFESSIONAL ENGINEER
 MICHAEL W. ODEN
 67165
Michael W. Oden
 8-15-2017

**PESCADITO ENVIRONMENTAL RESOURCE CENTER
 WEBB COUNTY, TEXAS
 MSW 2374**

EXCAVATION PLAN

PROJ. NO.:	148866	DATE:	AUGUST 2017
DESIGNED BY:	-	DRAWING NO.:	III
DRAWN BY:	MTE		D.1-3
CHECKED BY:	RDS		
APPROVED BY:	MWO		J OF 6 SHEETS



LEGEND

- PERMIT BOUNDARY
- WASTE BOUNDARY
- DETENTION BASIN
- PERIMETER DITCH
- PERIMETER ACCESS ROAD
- XX PROPERTY LINE AND EXISTING FENCE
- X EXISTING FENCE
- EXISTING 8' HOG FENCE
- DOWNCHUTE LOCATION
- 100-YEAR FLOODPLAIN (PER FIRM DATED APRIL 2, 2008, SEE NOTE 6)

NOTES

1. EXISTING CONTOURS DEVELOPED FROM SITE AERIAL TOPOGRAPHIC SURVEY BY DALLAS AERIAL SURVEYS ON FEBRUARY 15, 2010.
2. BOUNDARY AND IMPROVEMENT SURVEY DEVELOPED BY MEJIA ENGINEERING COMPANY ON AUGUST 15, 2011 AND JUNE 9, 2014.
3. FOR CLARITY, NOT ALL SITE FEATURES MAY BE SHOWN.
4. THE NEED FOR FLEXIBILITY TO ACCOMMODATE ADJUSTMENTS AND MODIFICATIONS IS ANTICIPATED CONSIDERING THE SIZE, COMPLEXITY, AND LIFE OF THE PROJECT.
5. ALL FACILITIES MAY NOT BE CONSTRUCTED AT THE SAME TIME.
6. 100-YEAR FLOODPLAIN FROM FLOOD INSURANCE RATE MAP FOR WEBB COUNTY, TEXAS, MAP NO. 48479C1275C, DATED APRIL 2, 2008. A CLOMR THAT WOULD REMOVE A LARGE AREA OF THE 100-YEAR FLOODPLAIN WITHIN THE PERMIT BOUNDARY WAS APPROVED BY FEMA ON NOVEMBER 21, 2014; HOWEVER, THE CLOMR IMPROVEMENTS HAVE NOT BEEN CONSTRUCTED.
7. FUTURE WASTE PROCESSING OR DISPOSAL AREA SUBJECT TO PERMIT MODIFICATION OR AMENDMENT.

REV. NO.	DATE	DESCRIPTION
1	08/2017	REVISED COMPLETION PLAN

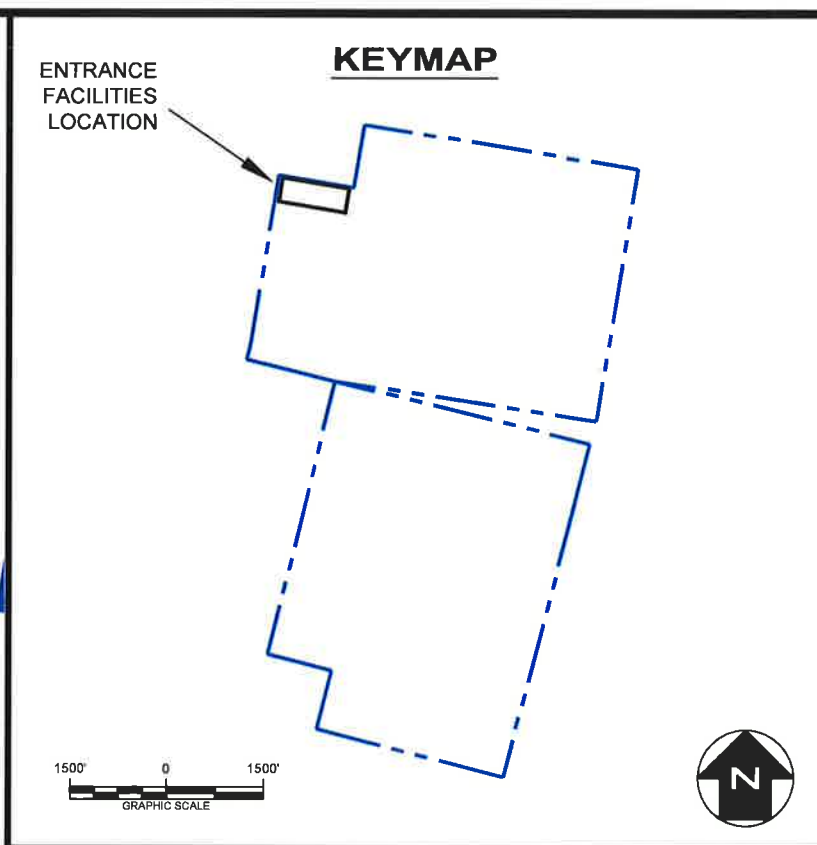
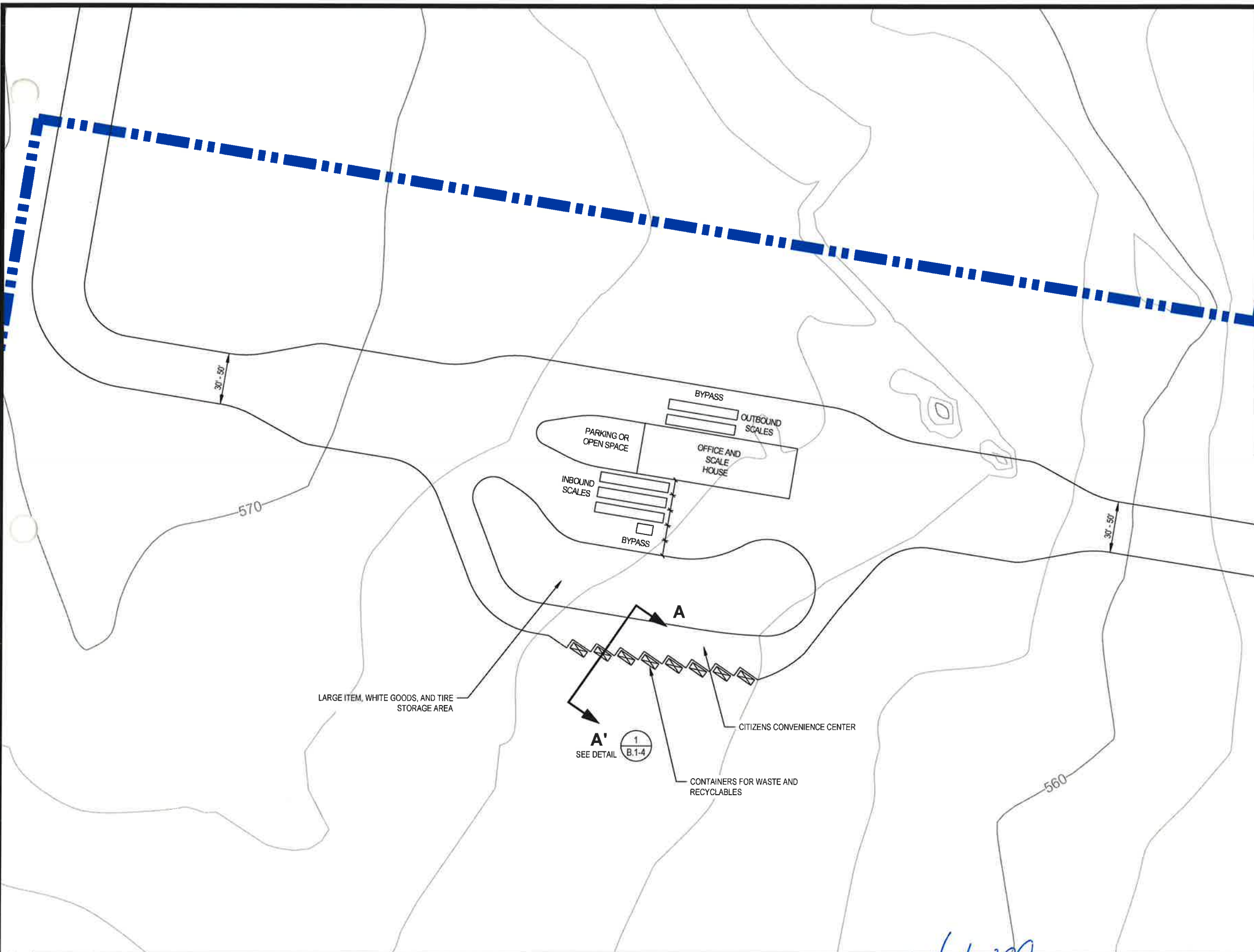
APTIM Environmental & Infrastructure, Inc.
(f/k/a CB&I Environmental & Infrastructure, Inc.)
 TBPE FIRM F-5650
APTIM Environmental & Infrastructure, Inc. has prepared this document for a specific project or purpose. All information contained within this document is copyrighted and remains intellectual property of APTIM Environmental & Infrastructure, Inc. This document may not be used or copied, in part or in whole, for any reason without expressed written consent by APTIM Environmental & Infrastructure, Inc.

THIS DOCUMENT IS RELEASED FOR THE PURPOSE OF PERMITTING UNDER THE AUTHORITY OF MICHAEL W. ODEN, P.E. 67165.
Michael W. Oden
 8-15-2017

PESCADITO ENVIRONMENTAL RESOURCE CENTER
WEBB COUNTY, TEXAS
MSW 2374

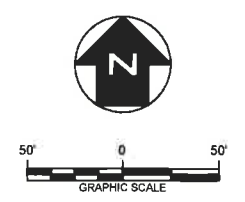
LANDFILL COMPLETION PLAN

PROJ. NO.:	148866	DATE:	AUGUST 2017
DESIGNED BY:	--	DRAWING NO.:	III
DRAWN BY:	MTE		D.1-4
CHECKED BY:	RDS		
APPROVED BY:	MWO		4 OF 6 SHEETS



- LEGEND**
- APPROXIMATE FACILITY BOUNDARY
 - ENTRANCE ROAD
 - EXISTING CONTOURS

- NOTES**
1. EXISTING CONTOURS DEVELOPED FROM SITE AERIAL TOPOGRAPHIC SURVEY BY DALLAS AERIAL SURVEYS ON FEBRUARY 15, 2010.
 2. FOR CLARITY, NOT ALL SITE FEATURES MAY BE SHOWN.
 3. ACTUAL DIMENSIONS, NUMBER OF SCALES, AND NUMBER OF CONTAINERS MAY CHANGE DEPENDING ON AMOUNT OF MATERIAL RECEIVED.



REV. NO.	DATE	DESCRIPTION
1	08/2017	REVISED ENTRANCE LOCATION

APTIM Environmental & Infrastructure, Inc.
(f/k/a CB&I Environmental & Infrastructure, Inc.)
 TYPE FIRM F-5650
 APTIM Environmental & Infrastructure, Inc. has prepared this document for a specific project or purpose. All information contained within this document is copyrighted and remains intellectual property of APTIM Environmental & Infrastructure, Inc. This document may not be used or copied, in part or in whole, for any reason without expressed written consent by APTIM Environmental & Infrastructure, Inc.

Michael W. Oden
 THIS DOCUMENT IS RELEASED FOR THE PURPOSE OF PERMITTING UNDER THE AUTHORITY OF MICHAEL W. ODEN, P.E. 67165.
 8-15-2017

**PESCADITO ENVIRONMENTAL RESOURCE CENTER
 WEBB COUNTY, TEXAS
 MSW 2374**

ENTRANCE FACILITIES PLAN

PROJ. NO.: 148868	DATE: AUGUST 2017
DESIGNED BY: -	DRAWING NO. III
DRAWN BY: GWM	D.1-5
CHECKED BY: RDS	5 OF 6 SHEETS
APPROVED BY: MWO	